

Kit 1059

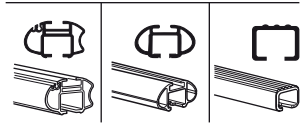
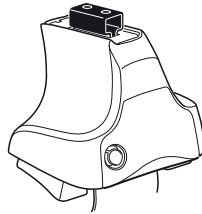
FIAT Bravissimo, 3-dr Hatchback, 96-02

FIAT Bravo, 3-dr Hatchback, 96-02

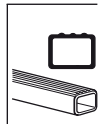
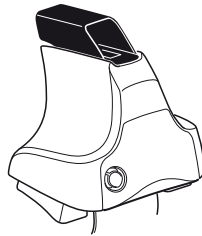
FIAT Brava, 5-dr Hatchback, 96-02

FIAT Marea, 4-dr Sedan, 96-02

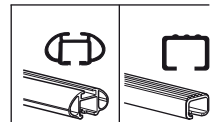
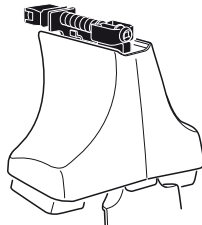
480R
754



480



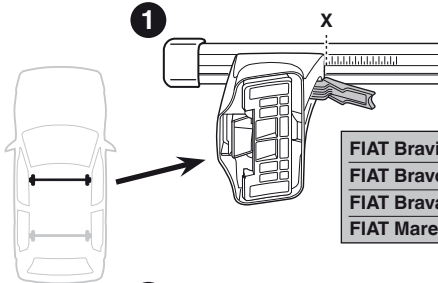
750



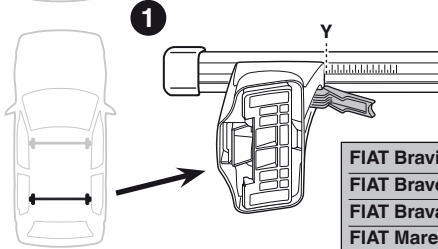
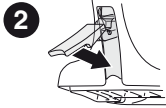
x2	x2	x2	x2	x2
x2		x2	x2	
x2		x4	x2	
x4		x4		

Kit

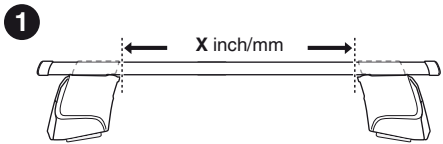
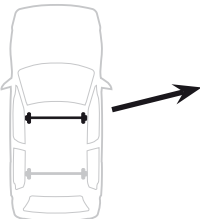
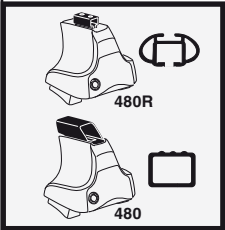




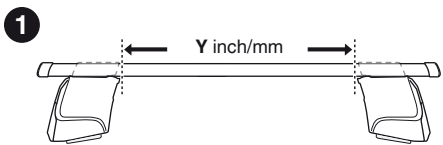
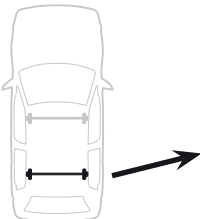
	X
FIAT Bravissimo, 3-dr Hatchback, 96-02	28
FIAT Bravo, 3-dr Hatchback, 96-02	28
FIAT Brava, 5-dr Hatchback, 96-02	29
FIAT Marea, 4-dr Sedan, 96-02	28,5



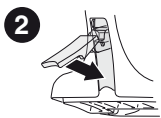
	Y
FIAT Bravissimo, 3-dr Hatchback, 96-02	25
FIAT Bravo, 3-dr Hatchback, 96-02	25
FIAT Brava, 5-dr Hatchback, 96-02	27
FIAT Marea, 4-dr Sedan, 96-02	27,5



	X inch	X mm
FIAT Bravissimo, 3-dr Hatchback, 96-02	36 5/8"	931 mm
FIAT Bravo, 3-dr Hatchback, 96-02	36 5/8"	931 mm
FIAT Brava, 5-dr Hatchback, 96-02	37"	941 mm
FIAT Marea, 4-dr Sedan, 96-02	36 7/8"	936 mm

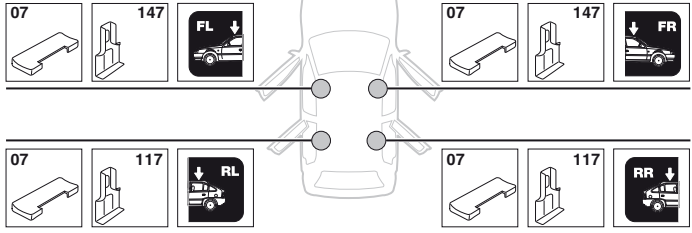


	Y inch	Y mm
FIAT Bravissimo, 3-dr Hatchback, 96-02	35 1/2"	901 mm
FIAT Bravo, 3-dr Hatchback, 96-02	35 1/2"	901 mm
FIAT Brava, 5-dr Hatchback, 96-02	36 1/4"	921 mm
FIAT Marea, 4-dr Sedan, 96-02	36 1/2"	926 mm

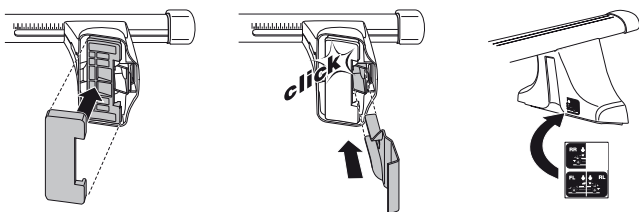
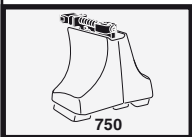
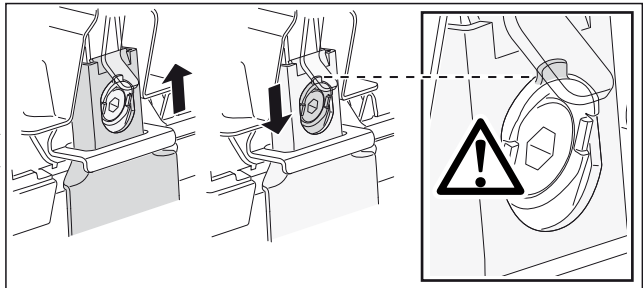
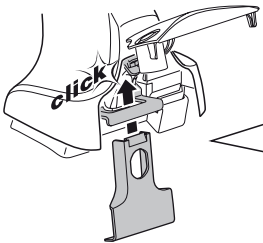
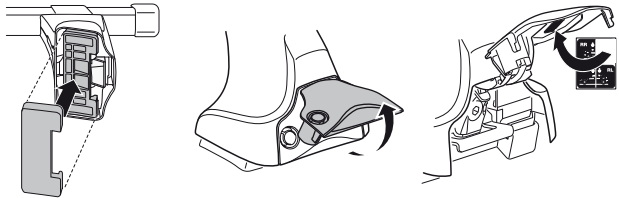
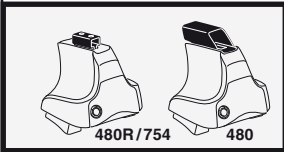
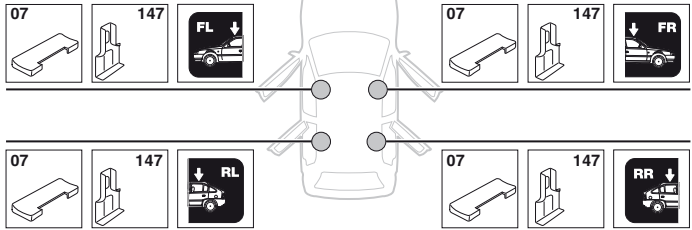


4

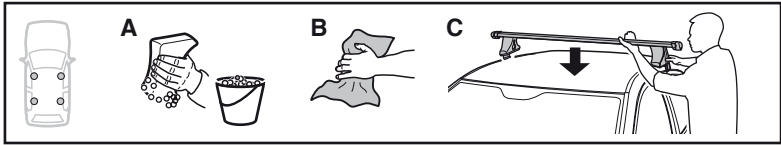
FIAT Bravissimo, 3-dr Hatchback, 96-02
FIAT Bravo, 3-dr Hatchback, 96-02



FIAT Brava, 5-dr Hatchback, 96-02
FIAT Marea, 4-dr Sedan, 96-02

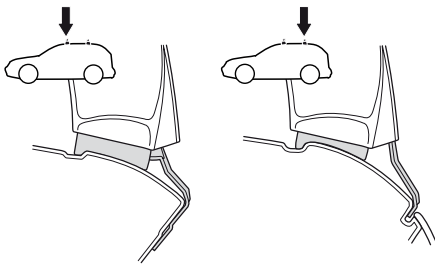
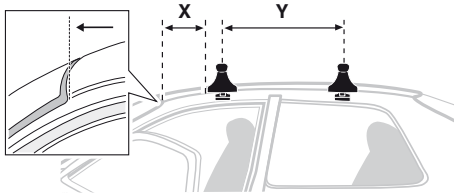


5

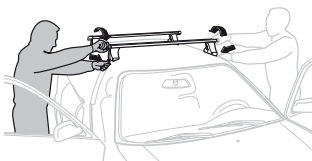
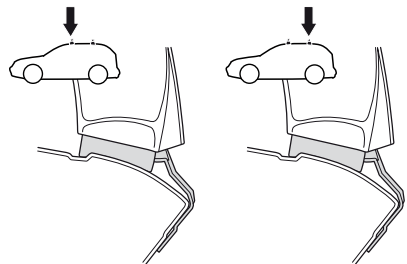
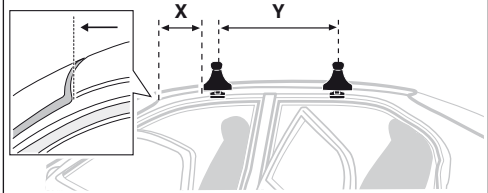


	X mm	Y mm	X inch	Y inch
FIAT Bravissimo , 3-dr Hatchback, 96-02	320 mm	700 mm	12 ⁵ / ₈ "	27 ¹ / ₂ "
FIAT Bravo , 3-dr Hatchback, 96-02	320 mm	700 mm	12 ⁵ / ₈ "	27 ¹ / ₂ "
FIAT Brava , 5-dr Hatchback, 96-02	190 mm	650 mm	7 ¹ / ₂ "	25 ⁵ / ₈ "
FIAT Marea , 4-dr Sedan, 96-02	230 mm	650 mm	9 "	25 ⁵ / ₈ "

FIAT Bravissimo, 3-dr Hatchback, 96-02
FIAT Bravo, 3-dr Hatchback, 96-02



FIAT Brava, 5-dr Hatchback, 96-02
FIAT Marea, 4-dr Sedan, 96-02



GB/US Tighten alternately
D Die Schrauben abwechselnd anziehen
F Serrer alternativement chaque côté
NL Afwisselend aan de linker- en de rechterkant aandraaien
I Alternare il serraggio delle viti
E Apretar alternativamente
PT Aperte alternadamente
S Dra åt växelvis
FIN Kierrä vuorotellen
EST Pinguldage vaheldumisi
LAT Pieļvelciēt pamišus
LIT Užsukinėkite pakaitomis
PL Śruby dokręcaj naprzemiennie
RU Затягивайте попеременно

CZ Pokręťta bagażnika dokręcaj dokręcaj naprzemiennie.
SK Doťahujte striedavo
SLO Privijajte izmenično.
HR Naizmjenično zategnite
HU Egymástól függetlenül szorítandó
GR Σφιγγεται εναλλάξ
TR Dönüşümlü sıkın

中文 交替拧紧

한국어 번갈아 가며 조이십시오.

日本語 交互に締め付けてください。

ไทย ชั้้นโน้บแบบสลับ

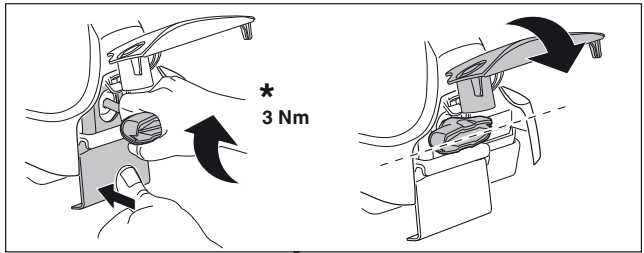
6



480R/754



480



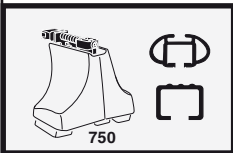
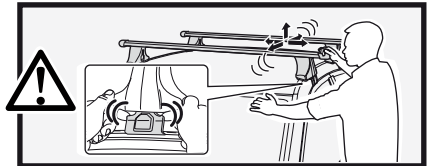
*
3 Nm



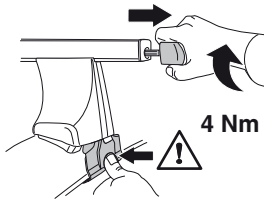
*



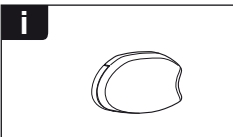
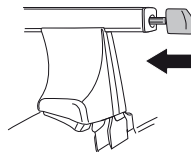
*
≈ 3 Nm



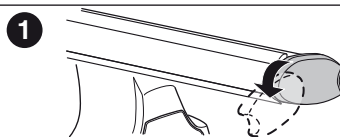
750



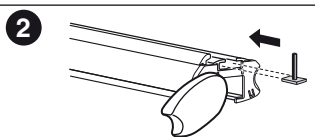
4 Nm



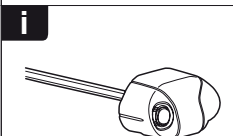
i



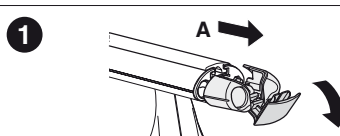
1



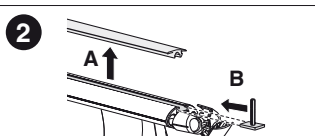
2



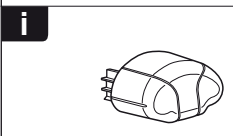
i



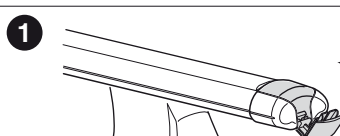
1



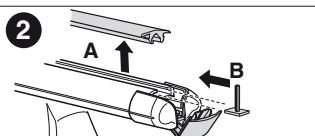
2



i



1



2



THULE
SWEDEN
**ONE
KEY
SYSTEM**



- 544 (x4)
- 596 (x6)
- 588 (x8)
- NA 510 (x10)
- EUR 452 (x12)
- ASIA 452 (x12)



WW ▶ Thule Sweden AB, Box 69, 330 33 Hillerstorp, SWEDEN
NA ▶ Thule Inc., 42 Silvermine Road, Seymour, Connecticut 06483, USA

info@thule.com
customer.service@thule.com

www.thule.com